

CTX50 MINI SKID STEER



LIFT MORE. Vertical geometry lift loader arms help provide an ISO-rated operating capacity of 600 lb (272.2 kg).



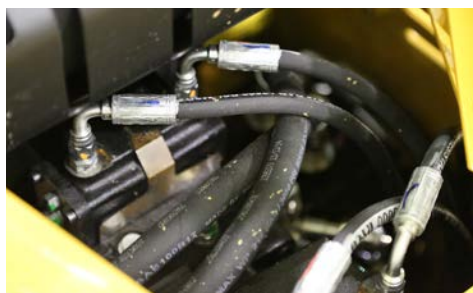
STEADY TURNS. A single, pilot-operated ground drive joystick offers a smooth range of motion without balancing engagement of two separate controls.



LOWER YOUR COST OF OPERATION. The undercarriage features a high-mounted track sprocket. The higher mounting reduces premature wear and tear in rocky soil conditions, while the cast sprocket is heat-treated for longer life.



SERVICEABILITY IS KEY. Access to engine and important components can be found near the upper and rear portion of the machine for easy maintenance.



MAXIMUM POWER. The hydraulic pumps are attached directly to the engine giving the machine a greater power advantage over models directing power from the engine through the belt to the pump.



ENJOY THE RIDE. A dedicated spring-cushioned platform keeps the operator out of the mud. The integrated operator presence system suspends ground drive and powered boom/bucket motion when the operator steps off the platform.

CTX50 MINI SKID STEER

GENERAL

Length: 75" (190.5 cm)

Width: 35.5" (90.2 cm)

Height: 54.5" (138.4 cm)

Weight: 2100 lb (952.5 kg)

Hinge pin height: 72" (182.9 cm)

Ground clearance: 6" (15.2 cm)

Ground pressure: 4.5 psi (31.0 kPa)

ENGINE

Make/Model: Kohler Command PRO EFI ECH740

Gross horsepower: 25 hp (18.6 kW)

Torque (max): 38.8 ft-lb (52.6 Nm)

Displacement: 45 cu in (747 cc)

Fuel type: Gasoline

Fuel tank capacity: 4 gal (15.1 L)

Number of cylinders: V-twin

Cooling medium: Air

Max engine operating angle: 25 deg

PERFORMANCE

ISO-rated operating capacity: 600 lb (272.2 kg)

Tipping load [with 175 lb (79.4 kg) operator]: 1715 lb (777.9 kg)

Max forward travel speed: 3.5 m/h (5.6 km/h)

HYDRAULIC SYSTEM

Hydraulic tank capacity: 12 gal (45.4 L)

Auxiliary pump high flow: 12.5 gpm (47.3 L/min)

Auxiliary pump relief: 2950 psi (203.4 bar)

Fittings: Quick coupler

OPERATIONAL/ELECTRICAL

Steering: Single, pilot-operated joystick

Lift and curl: Single, dual-axis joystick

Battery: 12 volt

12 volt auxiliary power port

SAFETY

Operator presence system

Boom lockout arm

Manual park brake

Console cushions

OPTIONS

Extended warranty

Special paint

Planned maintenance

Vermeer Confidence Plus® Asset Protection Program

NOTES:

Vermeer Corporation reserves the right to make changes in engineering, design and specifications; add improvements; or discontinue manufacturing at any time without notice or obligation. Equipment shown is for illustrative purposes only and may display optional accessories or components. Please contact your local Vermeer dealer for more information on machine specifications. Vermeer, the Vermeer logo, Equipped to Do More and Ecolde are trademarks of Vermeer Manufacturing Company in the U.S. and/or other countries. © 2015 Vermeer Corporation. All Rights Reserved. Printed in the U.S.A. Please recycle.

